



3-in-1:

- Dissector
- Retractor
- Sizer



The Triple Tool

Designed and Inspired by
Dr. Luis Da Cruz

For use in
Gluteal
Augmentation
utilizing
intra-muscular
and subfascial
techniques

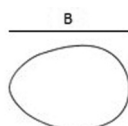
Rotary dissection
creates a safe,
thick pocket
in less than two
minutes

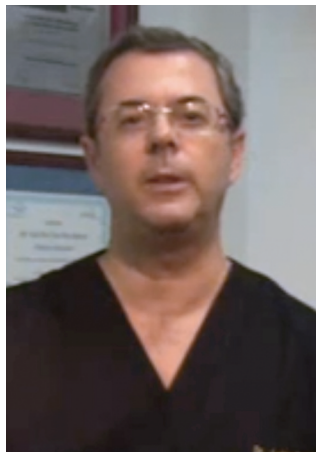
Proprietary
design
facilitates
control and
precision

Table for Implant Sizes

Volume of Implant (cc)	Length of "B" (cm)*
280	16
320	17
430	18

*Dimensions will change depending on the style and manufacturer.





Dr. Luis Da Cruz

"Marina Medical is keen on innovation and is well-known as a pioneer in the plastic surgery field. I am **Dr. Luis Da Cruz**, and together we have developed a new device designed for gluteal augmentation with intra-muscular and subfascial implants. Our goal is to standardize the steps in order to consistently achieve the appropriate depth for implant location and the correct thickness of gluteal muscle covering the implant.

The Triple Tool we developed is a unique 3-in1 instrument. It is a:
• Dissector • Retractor and • Sizer
all in one instrument."

Marina Medical is proud to offer superior instrumentation designed and inspired by Dr. Da Cruz.



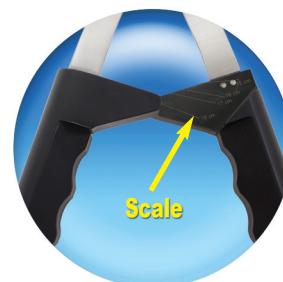
Inverting the position of the blades allows you to adapt to both gluteal sides for right or left dissection.



Together, the blades are connected by a stable handle and a pivot that creates a very strong union and helps make the displacement of tissue and opening of the full pocket for revision as a retractor.



The ergonomic design accommodates all anatomical implants.



A scale is located on the distal end of the handle.



Separately, each blade becomes a dissector and a retractor.



The thin blades with rounded edges allow gentle dissection of muscle fibers. The weight of the instrument also helps to provide better control.



The weight and every curve of the instrument plays a significant part in the stability and control provided.



Watch Dr. Da Cruz's video on the Marina Medical website for more information on the Triple Tool.